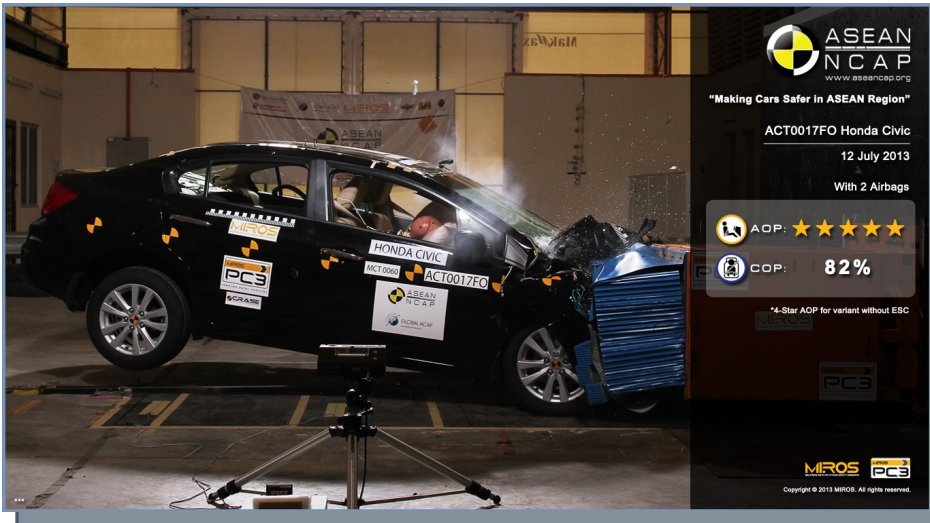


HONDA CIVIC

ASEAN NCAP PHASE II



VARIANT **1.8 L AT**

YEAR BUILT **2013**

MODEL YEAR **2013**

VEHICLE CATEGORY **SEDAN**

ENGINE CAPACITY **1.8 L PETROL**

KERB MASS **1242**

TEST LAB



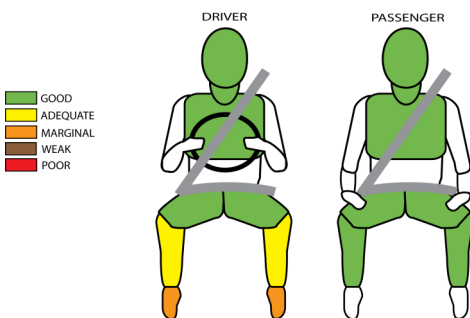
TESTED VARIANT ORIGIN	THAILAND	FOR	INDONESIA
OTHER ASEAN PRODUCTION	THAILAND	FOR	BRUNEI, SINGAPORE, THAILAND, CAMBODIA, LAOS, MYANMAR
	MALAYSIA	FOR	MALAYSIA
	PHILIPPINES	FOR	PHILIPPINES
	VIETNAM	FOR	VIETNAM

Honda Civic in ASEAN has several sources of production, whereby Thailand is the main for ASEAN market. Countries such as Malaysia, Philippines and Vietnam produced this model locally, with some variants share the same specifications. Honda sets double airbags for driver and front passenger and ABS with SBR for Driver as standard fit across ASEAN market, but SBR for passenger and ESC are only available on higher variants. The tested Civic in ASEAN NCAP is offered in two variants in Indonesian market, in which the base variant is not eligible for 5-star car due to the absence of ESC and SBR. This sedan scored 14.63 in the Adult Occupant Protection (AOP) and 82% in the Child Occupant Protection (COP) ratings, which places it in the 4-star category (base model) but variant with ESC & SBR is rated 5-star.



ADULT OCCUPANT PROTECTION

AOP POINTS **14.63**



MODIFIER **Blocked brake pedal**

SAFETY ITEMS		TESTED VARIANT	OTHER ASEAN VARIANT
AIRBAGS	DAB : PAB	S : S	S : S
SBR	Driver : Front Passenger	S : X	S : V
SEATBELT	Retractor Pre-tensioner & Load Limiter for Driver	S	S
	Retractor Pre-tensioner & Load Limiter for Front Passenger	S	S
3-POINT BELT	All Forward Facing Seats	S	S (V for 2nd Row Middle Seat)
ABS	Anti-lock Braking System	S	S
ESC	Stability Control	X	V

* Variant without ESC is rated 4-Star.

Key:

S : Standard on all variants

O : Optional on base; Standard on higher variants

V : Not available on base; Standard/Optional on higher variants

X : Not available

ESC & SBR required for 5-Star rating from 2012

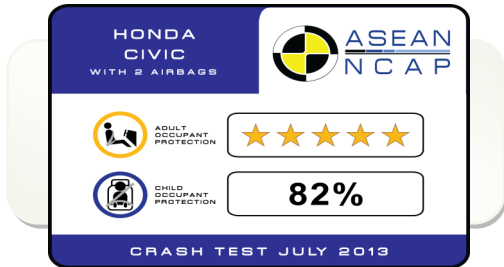


HONDA CIVIC

ASEAN NCAP PHASE II



COP Compliance **82 %**



* Variant without ESC is rated 4-Star.

CRS TYPE	P3	P1.5
ATTACHMENT	ISOFIX + Top Tether	ISOFIX
BRAND	Britax Duo Plus [Honda Genuine ISOFIX CRS]	Britax Baby Safe Plus SHR II [Honda Genuine ISOFIX CRS] Britax Baby Safe ISOFIX Base

CHILD OCCUPANT PROTECTION

Dynamic Test (max. 24)	CRS Based Assessment (max. 12)	Vehicle Based Assessment (max. 13)	TOTAL (max. 49)	Compliance (%)
22.09	12	6	40.09	82

